

In the living room of this 11,290-square-foot house outside Seattle, a Knoll Barcelona daybed and Danskina area rug connect two Minotti Albers Classic sofas from Inform Interiors. The fireplace surround features an Idyllwild stone slab from Ann Sacks. The abstract painting is by Kirkland, Washington, artist Beth Adams. **OPPOSITE:** Architect Stuart Silk worked with Richard Hartlage, formerly of AHBL Landscape Architecture and now principal of Land Morphology, to reshape the land around the house. All windows were replaced with Fleetwood windows.

# COOL AND COLLECTED

Written by DEANNA DUFF • Photographed by ALEX HAYDEN



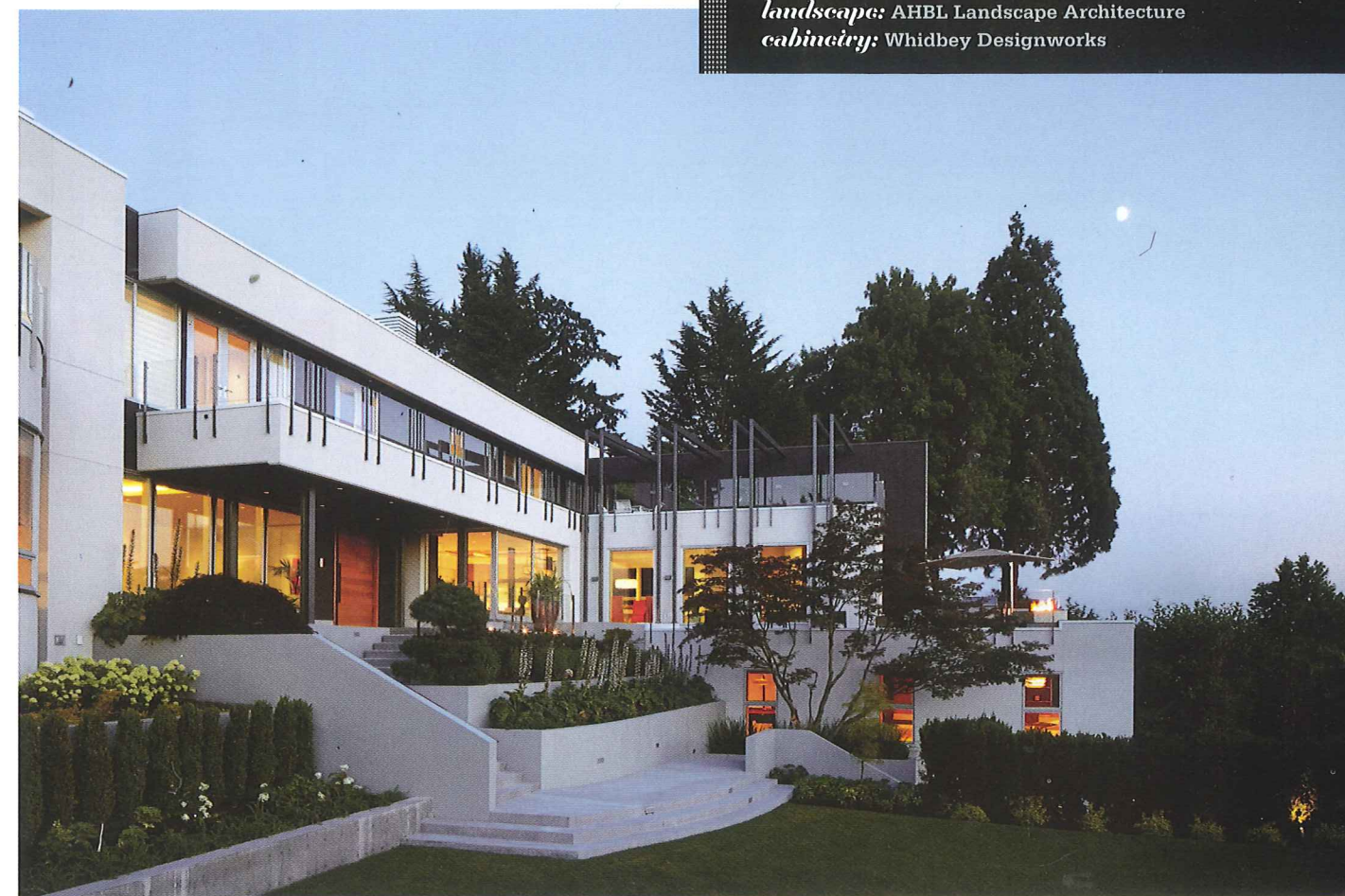
## DESIGN TEAM

*architecture and interiors:* Stuart Silk Architects

*construction:* Schuchart/Dow

*landscape:* AHBL Landscape Architecture

*cabinetry:* Whidbey Designworks



A SAVVY COUPLE GATHERED THEIR FAVORITE DESIGN FEATURES OF HOUSES PAST TO BRING AN OUTMODDED MANSE LUXURIOUSLY UP TO DATE.

**S**ometimes little things make the largest impressions. For one couple, it was a series of small details drawn from their former residences that helped to elevate their latest home—an 11,290-square-foot, once oppressive structure outside Seattle—into a welcoming, sophisticated space for a family of three.

The home's original style was "very 1980s. Visually, it resembled a business-park building," says Andrew Patterson, the co-lead project architect at Stuart Silk Architects, along with principal Stuart Silk. "It was a big project with an extremely intense schedule."

Fortunately, his clients weren't daunted by the challenge. They frequently hopscotch around the country due to work-

related assignments and have renovated and lived in six houses, from New York to Indiana to Arizona to California, over the past 20 years. Their newest home is an amalgam of some of their favorite design moves, observed and accumulated over the years.

It began in 2010 with a career relocation to Seattle. The family quickly bought the house, drawn to its large, private lot and lake views. They lived onsite during construction in a 1,500-square-foot apartment over the garage, accessible by elevator, that builders Schuchart/Dow renovated for them. The proximity allowed for an unusually high level of hands-on client involvement, including daily walk-throughs.

"Every single day I bet I made 50 to 100 decisions," the homeowner says with a laugh. "But it made the process a lot easier with less back and forth." »





**THIS PAGE:** Two islands with Caesarstone Blizzard countertops provide extra storage and workspace in the kitchen. A custom bronze pendant from Hamerton Studio hangs above. "We explored the notion of asymmetry throughout the house, but it's particularly evident with the kitchen," Silk says. Custom white-oak cabinets are designed so the grain flows unbroken from one panel to the next. The dining area features a Fritz Hansen PK58 table and Oxford High Back Chairs. **OPPOSITE:** In the adjacent family room, the relaxed Flexform sectional, ottoman, and lounge chair encourage sprawling out.

The couple, who have a teenage daughter, are self-proclaimed foodies, with the iconic *Modernist Cuisine* series on their bookshelf to prove it. When they purchased the four-level home, they envisioned remodeling just the front entry and kitchen. Plans for a proper dining room soon followed to accommodate dinner parties. Within 30 days, the minimal refresh became a comprehensive renovation as the team kept uncovering structural issues that needed repair, and they expanded the focus to include two kitchens, a new dining area, a redesign of the façade, and a 630-square-foot deck for grilling.

The main kitchen is an elegant frame for culinary art. The large area is defined by a pair of steel columns, linear light fixtures, and two islands. The clients suggested the oak ceiling feature to help visually connect the kitchen to the dining area. "The idea of reflection came from a house we had in upstate New York," says the husband. "It was our first house after marriage, and it really was dynamic in the way it made a room shrink and feel more intimate."

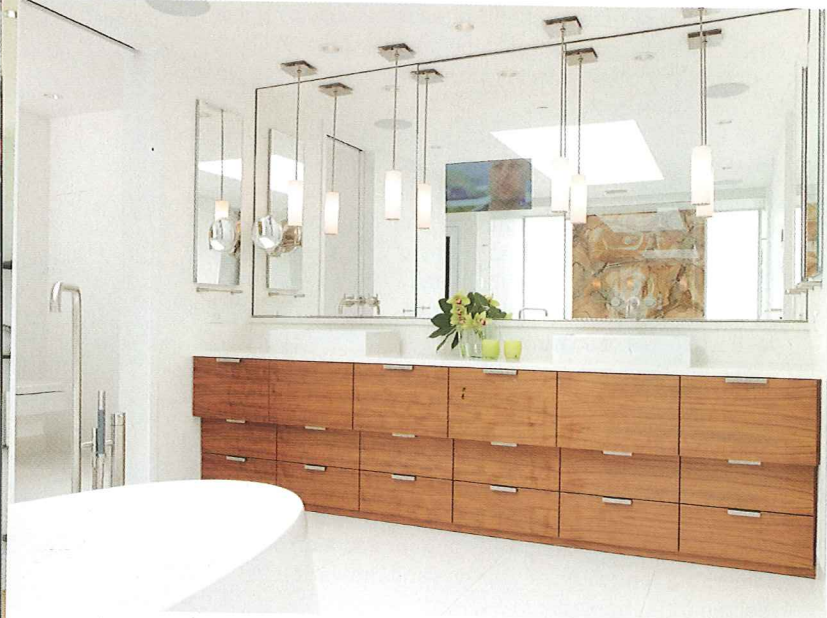
Tucked out of sight, accessible via a separate street entrance, is a second kitchen that can serve as a

"kitchen-behind-the-kitchen," intended for use by guest chefs. "That idea came from a neighbor's house in California," says the client. "We loved the idea of keeping a clean, fresh look for entertaining."

The original floor plan did not include a formal dining room, a significant issue for the clients. The designers carved out the necessary space by removing an eyesore—an industrial office-style stairway—and replacing it with a stunning open staircase that is as artful as it is functional. "We wanted it to feel super light and weightless even though it's made from steel," Silk says. "It's very structural yet has the feel of floating."

Though the house exudes a sense of no-cost-spared luxury, it's a comfortable and welcoming family home, and that's exactly what the clients envisioned. "We've been in homes that blow your socks off, but you also sometimes feel like there is a velvet rope across every room," the husband says. "You can stand anywhere in our house and there is a view, an interesting intersection of lines, or something that catches your eye and draws you in." We feel the attraction. »





The master bedroom features a painting by Beth Adams, custom fireplace, and walnut side table from Design Within Reach. Wood panels in the ceiling add a hint of Northwest style. **OPPOSITE, CLOCKWISE FROM TOP:** The architects carved out space for a formal dining room by replacing an enclosed stair with an airier, open version. The powder room stars a custom metal wall-hung vanity. The master bathroom's minimalism is offset by a slab of richly textured Brazilian granite in the shower (reflected in the mirror). The WS Bath Collections Touch 205 bathtub riffs on the aspects of asymmetry found elsewhere in the house. The floors and countertops are both Caesarstone. »





**OPPOSITE, CLOCKWISE FROM TOP:** The lounge, which leads onto an expansive deck, features a leatherlike wall covering from Cannon/Bullock. The Jacobsen Egg chair and stool are from Design Within Reach; the daybed is from BoConcept. The large walnut pivot door makes for a grand entry into the house. The new steel stairs between the first and second levels have a wood inlay detail that resembles a runner. **THIS PAGE:** Silk and his team reskinned the exterior of the house with new stucco-and-wood siding and replaced a solid stucco parapet with a steel-and-glass railing to open up views to the lake. #

"WE'VE BEEN IN HOMES WHERE YOU FEEL LIKE THERE IS A VELVET ROPE ACROSS EVERY ROOM. YOU CAN STAND ANYWHERE IN OUR HOUSE AND THERE IS SOMETHING THAT CATCHES YOUR EYE AND DRAWS YOU IN."—HOMEOWNER

